

CALYPSO

**Fistream Calypso Ultrapure automatic
Water Stills offer many of the proven
features of the high performance
Cyclon Still at an economical price**



FISTREAM™

Calypso Ultrapure Water Still

The attractive totally enclosed powder coated cabinet with acrylic front cover provides a safe production environment.

The Calypso is available with outputs of 2 or 4 l.hr⁻¹ and can be bench or wall mounted. The 2 litre Still is suitable for use in the smaller laboratory or for users with modest demands. If higher outputs are required the 4 litre model is ideal.

Guaranteed Purity

Incorporating the patented 'cyclonic' vapour trap, the Calypso produces the very highest quality pyrogen free water. Purity is also assured through an all borosilicate glass construction and the use of durable, silica sheathed heating elements.

The Calypso can be connected directly to a mains tap supply or where preferred, from a pre-treated water supply using the optional pre-treated feed kit. An automatic flow controller governs the rate of water consumption and allows the unit to be used over a wide tap water pressure range. In the pre-treated mode, purified water is fed directly to the boiler and tap water is used for cooling purposes only.

The Still is supplied with a polyethylene level sensor which automatically shuts off power and input water whenever the reservoir is full, enabling safe, unattended operation.

The Calypso Still is offered with an optional reservoir tank which allows a reserve of up to 30 litres' storage capacity. The tank's polyethylene liner is fitted with a bacterial air filter, fast flow tap and contents sight tube and provides a convenient and compact collection system. Automatic shut off is provided by the Still's controls.

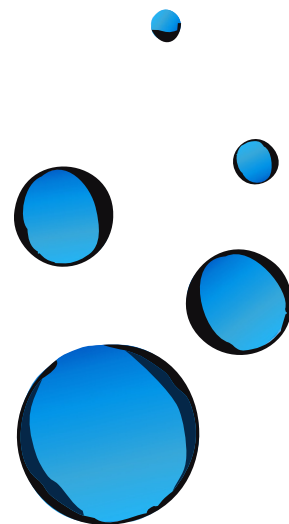


Safe and Easy to Use

A high temperature cut-off protects the heaters in the event of water failure while operator safety is assured through totally enclosed glassware.

For ease of cleaning, the Still is fitted with a boiler drain valve. Cleaning solution is simply introduced into the boiler via the constant level device - no dismantling is necessary.

All models are bench or wall mountable and are supplied complete with all necessary connection hoses and wall brackets.



Specifications

Model	WCA002	WCA004
Output Capacity	2 litres . hr ⁻¹ Single distilled	4 litres . hr ⁻¹ Single distilled
Pyrogen Free	Yes	Yes
pH	5.6-6.0	5.6-6.0
Conductivity	1µS. cm ⁻¹	1µS. cm ⁻¹
Power Rating	1.8kW	3.0kW
Tap Water Pressure (Min - Max)	70-560 kPa 10-80 lbf.in ⁻²	70-560 kPa 10-80 lbf.in ⁻²
Minimum Water Pressure for Pretreated flow valve	15 kPa 2 lbf.in ⁻²	15 kPa 2 lbf.in ⁻²
Tap Water Flow (Min)	0.5 litres.min ⁻¹	1 litre.min ⁻¹
Dimensions (HxWxD) mm	790 x 260 x 325	790 x 260 x 325
Weight	15 kg	15 kg

Ordering Information

Catalogue No.	Output	Power	Dimensions WxDxH (mm)
WCA002.MH1.4	2 L/hr Single	220V 1.8kW	260 x 325 x 790
WCA002.MH1.7	2 L/hr Single	240V 1.8kW	260 x 325 x 790
WCA004.MH1.4	4 L/hr Single	220V 3.0kW	260 x 325 x 790
WCA004.MH1.7	4 L/hr Single	240V 3.0kW	260 x 325 x 790

Accessories

Catalogue No.	Description	Capacity	Dimensions WxDxH (mm)
WCA900.RTA.9	Storage Reservoir	30 litre	260 x 325 x 790
WCA901.SVA.7	Pre-Treat feed accessory kit	-	-

Fistreem International Limited:

Beacon House,
Nuffield Road,
Cambridge,
CB4 1TF,
UK

Telephone: +44 (0)1223 727100
Fax: +44 (0)1223 727101
Email: sales@fistreem.co.uk

Website: www.fistreeminternational.com

Please refer to www.fistreeminternational.com for all ordering information.



Calypso 1219